

My Island

Südseefantasie für Klavier, Streichorchester und Percussion

Joachim Johow 1993

Presto

MM: 80

A

Violine 1
Violine 2
Viola
Violoncello
Bass
Klavier

pizz
Presto
MM: 80
f
pp

This system contains the first six staves of the score. The string parts (Violine 1, Violine 2, Viola, Violoncello, Bass) are in 2/2 time and feature a rhythmic pattern of eighth and sixteenth notes. The piano part (Klavier) is in 2/2 time and features a steady accompaniment of chords. A box labeled 'A' is placed above the first measure of the Violine 1 staff. The piano part has a dynamic marking of *f* and **pp** in the first measure.

7
VI. 1
VI. 2
Vla.
Vc.
B.
Klav.

This system contains staves 7 through 13. The string parts continue with their rhythmic patterns. The piano part continues with its accompaniment. The Violoncello part has a dynamic marking of *pizz* in the first measure.

14
VI. 1
VI. 2
Vla.
Vc.
B.
Klav.

This system contains staves 14 through 20. The string parts continue with their rhythmic patterns. The piano part continues with its accompaniment.

20

VI. 1
VI. 2
Vla.
Vc.
B.
Klav.

arco

Detailed description: This system contains measures 20 through 26. It features six staves: Violin 1 (VI. 1), Violin 2 (VI. 2), Viola (Vla.), Violoncello (Vc.), Bass (B.), and Keyboard (Klav.). The Violin 1 part has a melodic line with slurs and ties. The Violoncello part includes the instruction 'arco' starting at measure 21. The Keyboard part provides harmonic support with chords and arpeggios.

27

VI. 1
VI. 2
Vla.
Vc.
B.
Klav.

Detailed description: This system contains measures 27 through 33. It features the same six staves as the previous system. The Violin 1 part continues with a melodic line, showing some chromatic movement. The Viola part has a similar melodic line. The Keyboard part continues with harmonic accompaniment.

34

B

VI. 1
VI. 2
Vla.
Vc.
B.
Klav.

f *Ped.* *

Detailed description: This system contains measures 34 through 39. It features the same six staves. A section marker 'B' is placed above the first measure (34) and below the fifth measure (38). The Keyboard part has a dynamic marking 'f' at the start of measure 38 and 'Ped.' with an asterisk in measures 38, 39, and 40. The Violin 1 part has a melodic line with slurs.

41

VI. 1
VI. 2
Vla.
Vc.
B.
Klav.

46

VI. 1
VI. 2
Vla.
Vc.
B.
Klav.

52

C

VI. 1
VI. 2
Vla.
Vc.
B.
Klav.

p
p
p
p
p
p

C

beid Wdgh Oktave höher

59

VI. 1
VI. 2
Vla.
Vc.
B.
Klav.

Detailed description: This system of music covers measures 59 to 65. It features six staves: Violin 1, Violin 2, Viola, Violoncello, Bass, and Piano. Measures 59-61 show a melodic line in the strings with a long note in the violins and a rhythmic pattern in the piano. Measures 62-65 continue the melodic development in the strings, with the piano providing a steady accompaniment.

66

VI. 1
VI. 2
Vla.
Vc.
B.
Klav.

D

pizz
pizz
ff
f
ff
f

Detailed description: This system covers measures 66 to 71. A double bar line is present at measure 66. Above the first staff, a box contains the letter 'D'. From measure 67 onwards, the string parts (VI. 1, VI. 2, Vla., Vc., B.) play a series of chords with a 'pizz' (pizzicato) instruction. The piano part continues with a rhythmic accompaniment, marked with a forte 'f' dynamic. A 'ff' (fortissimo) dynamic is indicated for the piano in measure 70.

72

VI. 1
VI. 2
Vla.
Vc.
B.
Klav.

Detailed description: This system covers measures 72 to 76. The string parts (VI. 1, VI. 2, Vla., Vc., B.) play a series of chords, continuing the 'pizz' pattern from the previous system. The piano part continues with a rhythmic accompaniment, marked with a forte 'f' dynamic. The system concludes with a double bar line and repeat dots.

77 **E**

VI. 1
VI. 2
Vla.
Vc.
B.
Klav.

83

VI. 1
VI. 2
Vla.
Vc.
B.
Klav.

89 **F**

VI. 1
VI. 2
Vla.
Vc.
B.
Klav.

96

VI. 1
VI. 2
Vla.
Vc.
B.
Klav.

This system of music covers measures 96 to 102. It features six staves: Violin 1 (VI. 1), Violin 2 (VI. 2), Viola (Vla.), Violoncello (Vc.), Bass (B.), and Piano (Klav.). The Violin and Viola parts are highly active with sixteenth-note patterns and slurs. The Piano part provides a harmonic accompaniment with chords and moving lines in both hands.

103

VI. 1
VI. 2
Vla.
Vc.
B.
Klav.

This system of music covers measures 103 to 108. The Violin and Viola parts continue with melodic lines, including some rests. The Piano part maintains its accompaniment, with some changes in texture and dynamics.

109

VI. 1
VI. 2
Vla.
Vc.
B.
Klav.

This system of music covers measures 109 to 114. The Violin and Viola parts show more rests and sustained notes. The Piano part features a more active bass line with eighth-note patterns. The system concludes with a double bar line.

My Island

Südseefantasie für Klavier, Streichorchester und Percussion

Joachim Johow 1993

Presto

MM: 80

5 **A**

10

15

20

25

31

37 **B**

44

51 **C**

59

p

Violine 1

67 **D**



73



78 **E**
f



83



88



93 **F**



98



103



108



Viola

My Island

Südseefantasie für Klavier, Streichorchester und Percussion

Joachim Johow 1993

Presto MM: 80



5 **A**



12



19



25



30



36

B



43



48



53

C



p

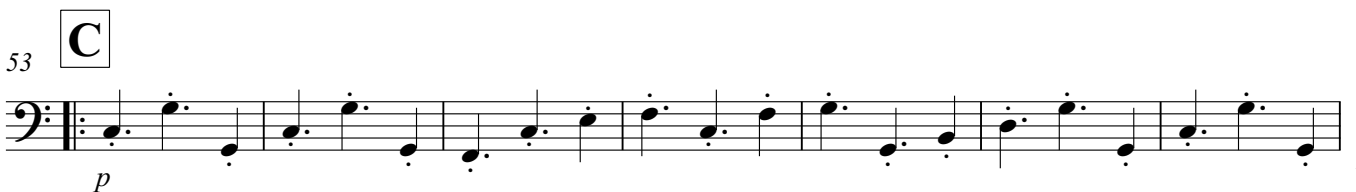
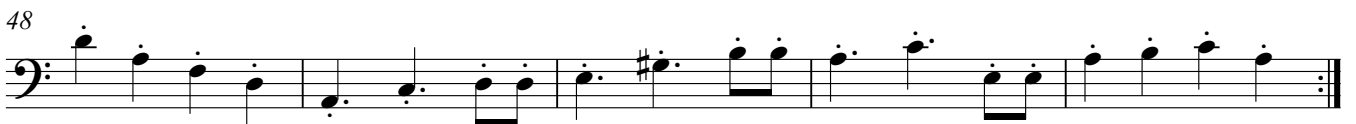
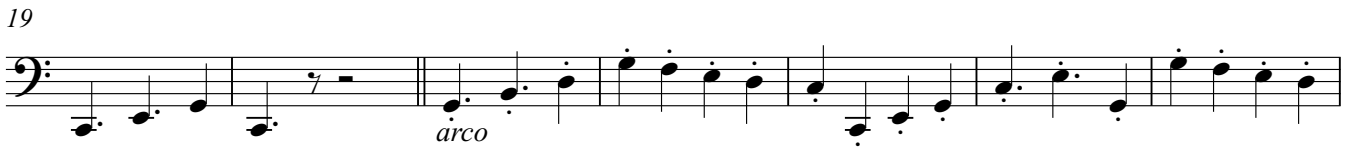
My Island

Violoncello

Südseefantasie für Klavier, Streichorchester und Percussion

Joachim Johow 1993

Presto MM: 80



Violoncello

60



67



72



78



85



92



99



105



110



Bass

My Island

Südseefantasie für Klavier, Streichorchester und Percussion

Joachim Johow 1993

Presto MM: 80



A *pizz*



12



19



26



32



B



43



48



C



p

V.S.

Bass

59



66

D



f arco

72



78

E



85



92

F



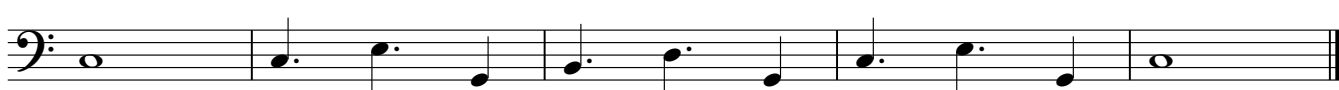
98



105



109



My Island

Südseefantasie
für Klavier ud Streichorchester

Joachim Johow 1993

Presto $\text{♩} = 84$

Klavier

Measures 1-4 of the piece. The right hand has whole rests, while the left hand plays a rhythmic pattern of quarter notes and chords. The key signature has one sharp (F#).

Measures 5-9. The right hand begins with a series of chords, some with slurs, while the left hand continues with quarter notes and chords.

Measures 10-13. The right hand features more complex chordal textures with slurs, and the left hand maintains the rhythmic accompaniment.

Measures 14-18. The right hand continues with chordal patterns, and the left hand has a few notes with a sharp sign.

Measures 19-23. The right hand has a series of chords with slurs, and the left hand continues with quarter notes and chords.

Measures 24-28. The right hand has a series of chords with slurs, and the left hand continues with quarter notes and chords.

Measures 29-32. The right hand has a series of chords with slurs, and the left hand continues with quarter notes and chords.

34

39

43

46

50

56

62

68

Ped. *f* *Ped. 3* *** *Ped.* ***

Ped. *** *Ped. 3* *** *Ped. 3* ***

Ped. *** *3* *3* *3* *3* *Ped. 3* *** *3* *3* ***

Ped. 3 *** *Ped.* *3* *** *Ped.* *3* ***

p

73

1.

77

81

86

91

96

101

105